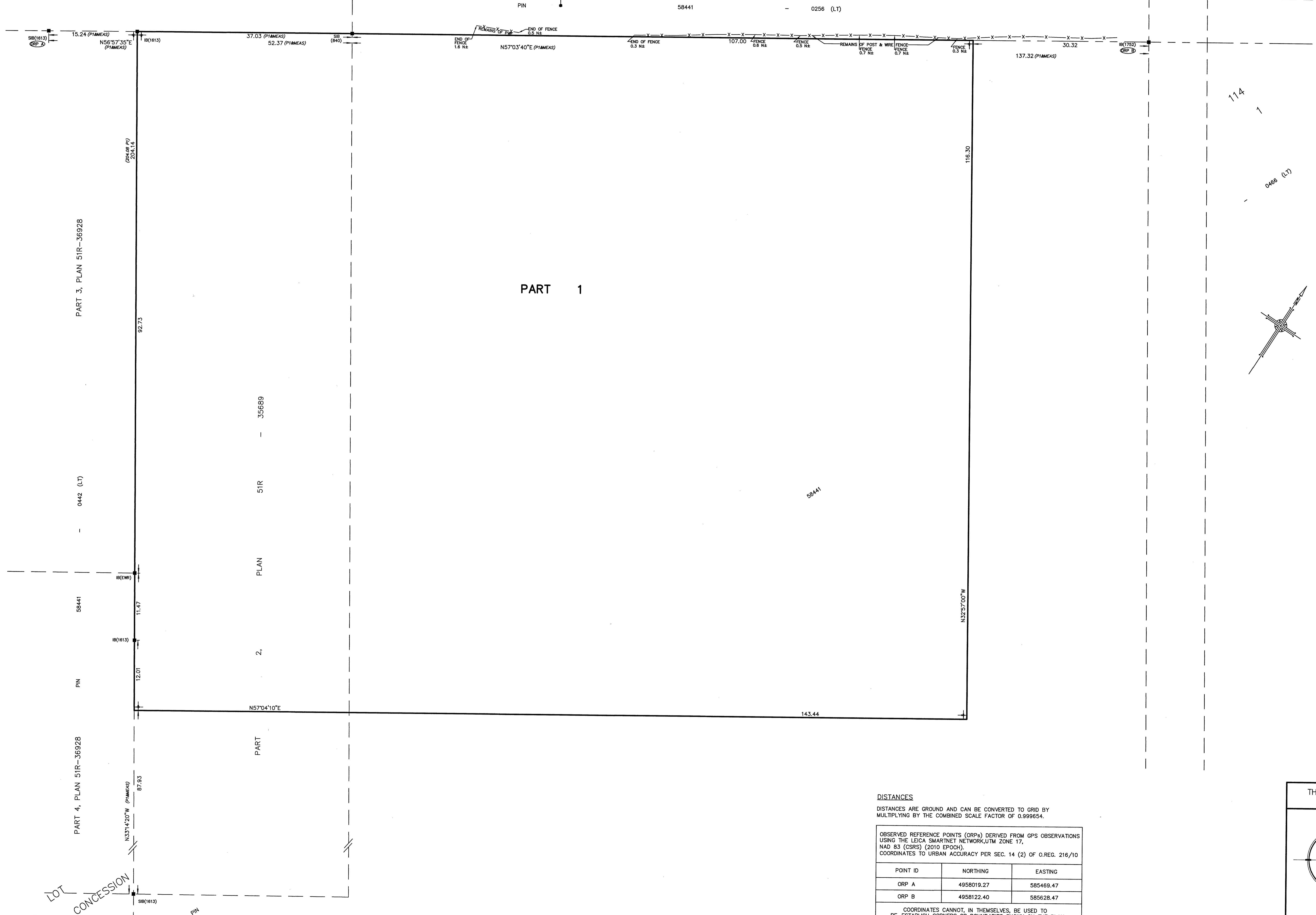


SCHEDULE				
PART	LOT	CONCESSION	P.I.N.	AREA (SQ.M.)
1	PART LOT 114	1	PART OF P.I.N. 58441-0466 (LT)	16713.4

PART 6, EXPROPRIATION PLAN
RO210559 (RD56) BY-LAW 1965-44

EDWARD STREET (BY REGISTERED PLAN 404)

EDWARD STREET (BY REGISTERED PLAN 101)



PLAN OF SURVEY OF
PART OF LOT 114
CONCESSION 1
GEOGRAPHIC TOWNSHIP OF TAY
TOWN OF PENETANGUSHENE
COUNTY OF SIMCOE

SCALE 1 : 300
RUDY MAK SURVEYING LTD.

THE INTENDED PLOT SIZE OF THIS PLAN IS
915MM IN WIDTH BY 610MM IN HEIGHT
WHEN PLOTTED AT A SCALE OF 1:300.

BEARING NOTE
BEARINGS ARE UTM GRID, DERIVED FROM OBSERVED REFERENCE
POINTS A TO B, BY REAL TIME NETWORK (RTN) OBSERVATIONS,
UTM ZONE 17, NAD83 (CSRS) (2010 EPOCH).
FOR BEARING COMPARISONS, A ROTATION OF 0°46'00\"/>

TIE DISTANCES NOTE:
ALL TIES SHOWN AS N, S, E AND W PROJECTING

- LEGEND**
- DENOTES FOUND SURVEY MONUMENT
 - DENOTES PLANTED SURVEY MONUMENT
 - SIB DENOTES STANDARD IRON BAR
 - SSIB DENOTES SHORT STANDARD IRON BAR
 - IB DENOTES IRON BAR
 - (P1) DENOTES PLAN 51R-35689
 - (1613) DENOTES A.J. WOROBEC, O.L.S.
 - (840) DENOTES J.M. HARVEY, O.L.S.
 - (1752) DENOTES C.L. PRESTON, O.L.S.
 - (EWR) DENOTES EPLETT, WOROBEC & RAIKES LTD.
 - ✕✕ DENOTES FENCING

METRIC
DISTANCES AND COORDINATES SHOWN ON THIS PLAN ARE IN METRES
AND CAN BE CONVERTED TO FEET BY DIVIDING BY 0.3048.
AREAS SHOWN ON THIS PLAN ARE IN SQUARE METRES AND CAN BE
CONVERTED TO IMPERIAL USING THE FOLLOWING CONVERSIONS:
1 Ha. = 10,000 Sq.m = 2.471 Ac.
1 Ac. = 43,560 Sq.ft.

SURVEYOR'S CERTIFICATE
I CERTIFY THAT:
1) THIS SURVEY AND PLAN ARE CORRECT AND IN ACCORDANCE
WITH THE SURVEYS ACT, THE SURVEYORS ACT AND THE
LAND TITLES ACT AND THE REGULATIONS MADE UNDER THEM.
2) THE SURVEY WAS COMPLETED ON THE 12TH DAY OF
NOVEMBER 2025.

NOVEMBER 18, 2025
DATE
GURJIT MAHANT
ONTARIO LAND SURVEYOR

DISTANCES
DISTANCES ARE GROUND AND CAN BE CONVERTED TO GRID BY
MULTIPLYING BY THE COMBINED SCALE FACTOR OF 0.998654.

POINT ID	NORTHING	EASTING
ORP A	4958019.27	585469.47
ORP B	4958122.40	585628.47

COORDINATES CANNOT, IN THEMSELVES, BE USED TO
RE-ESTABLISH CORNERS OR BOUNDARIES SHOWN ON THE PLAN.

THIS PLAN OF SURVEY RELATES TO AOLS PLAN
SUBMISSION FORM NUMBER V-121775.

M RUDY MAK SURVEYING LTD.
ONTARIO LAND SURVEYORS

732 DUNLOP STREET WEST
BARRIE, ONTARIO L4N 9X1 (705) 722-3845
E-MAIL MAIL@MAKSURVEYING.COM

DRAWN BY: YZL CHECK BY: GM FILE No. 17863_R